

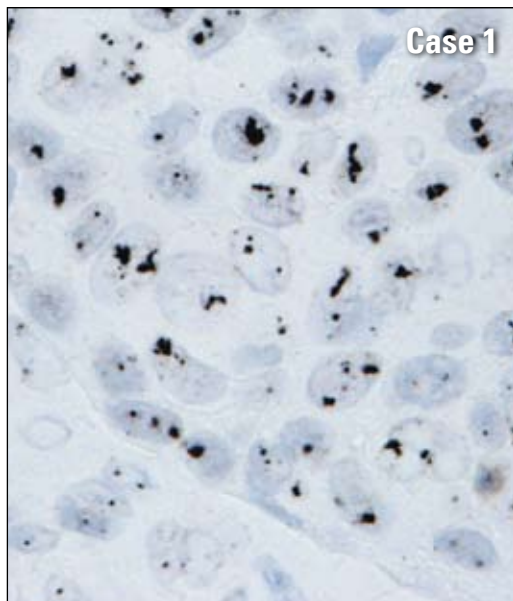
In situ Hybridization Reagents

Helping pathologists with tools for a timely and accurate diagnosis

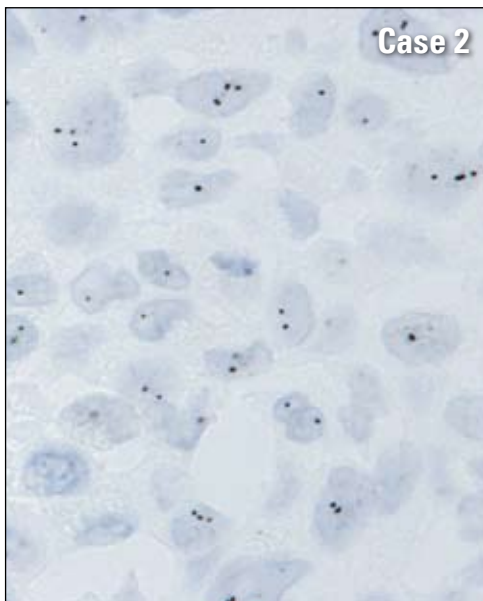
HER2 SISH

Now offering

INFORM™ HER2 SISH



Amplified *HER2*



Non-amplified *HER2*

True Same Day Results

- 6-hour time to diagnosis

Fully Automated

- All steps are fully automated
- Flexible integration into daily routine
- Reagents are pre-formulated "ready to use"

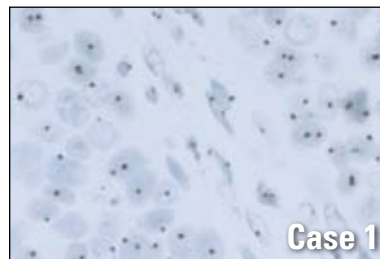
Simplified Interpretation

- Advanced silver deposition technology maximizes signal precision
- Morphology is easily distinguished as the assay is visualized under bright field microscopy
- Reported as a function of the *HER2*/Chr17 ratio
- Highly concordant with FISH
- Reproducible between pathologists
- Reproducible between laboratories

Archivable Staining

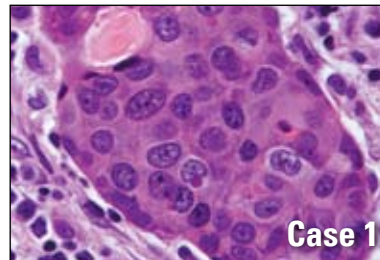
- Ability to discuss results and re-examine

INFORM Chr17



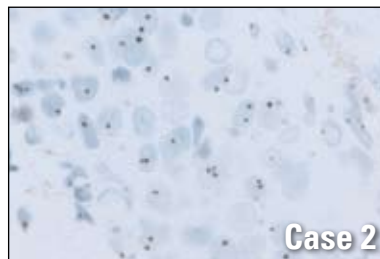
Chromosome 17, normal

HD H&E™



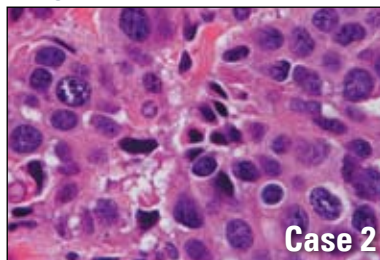
Breast carcinoma

INFORM Chr17



Chromosome 17, normal

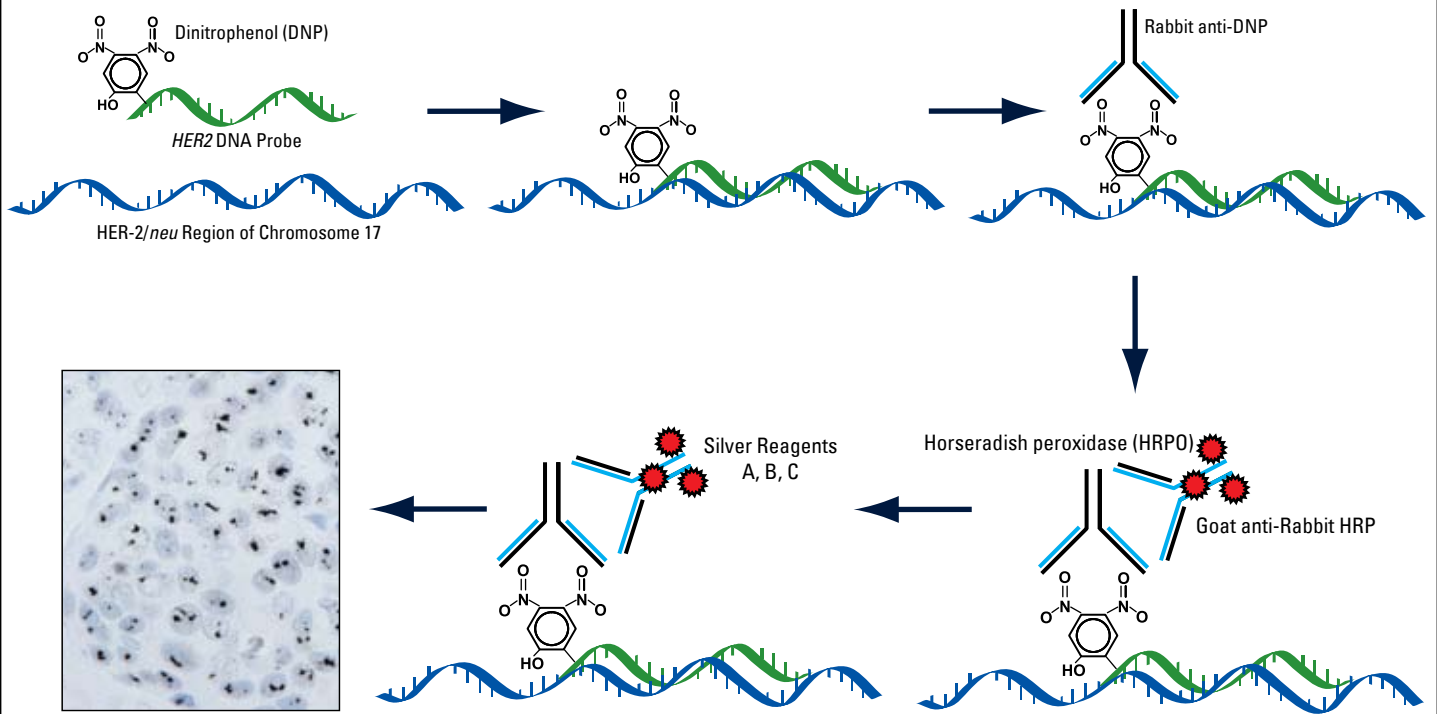
HD H&E™



Breast carcinoma

www.HER2SISH.com

HER2 SISH Detection



1. Enzyme (HRP) catalyzes reduction of silver ions to metallic silver.
2. Metal nanoparticles deposit at the site of the target hybridized to the probe.

- Silver Chromogen A; Silver Acetate solution
- Silver Chromogen B; Hydroquinone in a citrate buffer solution
- Silver Chromogen C; H_2O_2 in an aqueous solution

Product Name	Quantity	Catalog No.
INFORM™ HER2 DNA Probe	50 tests	780-4332
INFORM Chromosome 17 Probe	50 tests	780-4331
Rabbit anti-DNP Antibody	100 tests	780-4335
ultraView™ SISH Detection Kit	100 tests	780-001
ultraView Silver Wash	2 L	780-002
HER2 3-in-1 Xenograft Control Slides	10 slides	783-4332

INFORM HER2 SISH Genomic Probe / INFORM Chr17 Centromeric Probe	
Catalog No.	HER2 SISH: 780-4332 / Chr17: 780-4331
Method	Silver ISH, Quantitative Staining
Regulatory Status	IVD
Quantity	50 Tests
Storage	2° - 8° C
Automation	For use on BenchMark® Series platforms

See www.HER2SISH.com for more information

Corporate Offices

North America
Ventana Medical Systems, Inc.
1910 E. Innovation Park Drive
Tucson, Arizona 85755
U.S.A.
+1 (520) 887-2155
(800) 227-2155 (U.S.)

Europe
Ventana Medical Systems, S.A.
Parc d'Innovation - BP 30144
Rue G. de Kaysersberg
F - 67404 Illkirch CEDEX
France
+33 (0) 3 90 40 52 00

Japan
Ventana Japan K.K.
ベンタナ・ジャパン株式会社
〒220-8135 神奈川県横浜市
西区みなとみらい 2-2-1
横浜ランドマークタワー35 階
+81 (0) 45 228 5071

Australia, New Zealand
Ventana Medical Systems Pty Ltd
5/39 Grand Boulevard
Montmorency VIC 3094
Australia
+61 (0) 3 9431 6064

EC	REP
----	-----

MDCI Ltd.
Arundel House
1 Liverpool Gardens
Worthing
West Sussex BN11 1SL
U.K.